

2. Draw foundation plan of the house as shown in fig. 1 with foundation details. Assume missing data suitably.
3. Draw one horizontal and one vertical section through the house as shown in fig. 1. Take clear height 3.3 m. Assume missing data suitably.
4. Make complete construction details of T-1 in the fig. 1. Draw detailed plan of the toilet and all four side internal sections with necessary details.
5. Make complete wardrobe detail of W-1 in the fig. 1. Take wardrobe size as 0.6 m deep. Draw at least one vertical section through the wardrobe with blow-up details.

No. of Printed Pages : 04

Roll No. ....

**F4001**

**B.Arch. EXAMINATION, May 2019**

(Sixth Semester)

(B. Scheme) (Main & Re-appear)

(Arch.)

AR304B

**BUILDING CONSTRUCTION AND  
MATERIALS-VI**

*Time : 3 Hours]*

*[Maximum Marks : 75*

---

Before answering the question-paper candidates should ensure that they have been supplied to correct and complete question-paper. No complaint, in this regard, will be entertained after the examination.

---

**Note :** Q. No. 1 is compulsory, attempt any *two* questions out of the rest four questions. All questions carry equal marks.

1. Write short notes on the following :
- (a) Write short note on importance of working drawing.
  - (b) Draw any *ten* building material hatch types.
  - (c) Write specification for toilet flooring.
  - (d) Draw any *ten* electrical symbol used in working drawing.
  - (e) Write specification for swimming pool flooring material.

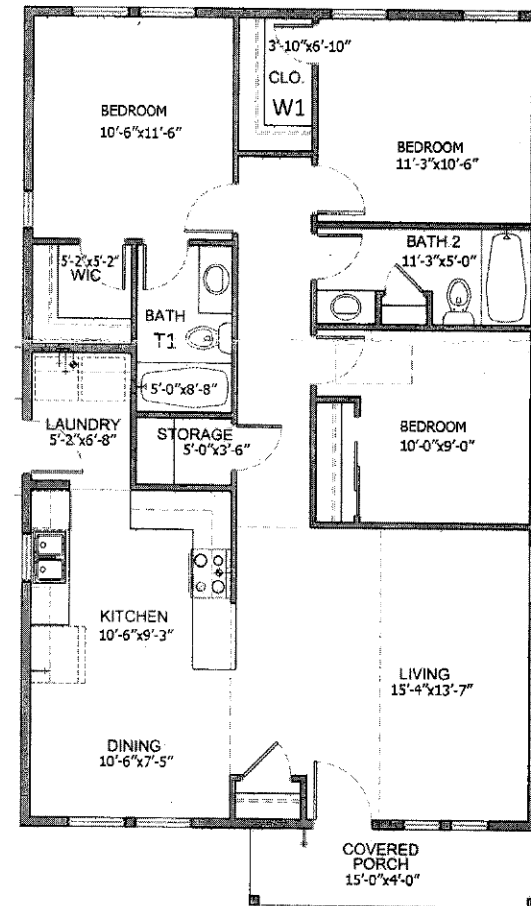


Fig. 1