

No. of Printed Pages : 3+2 Design Roll No.

C-35

B. Tech. EXAMINATION, Dec. 2018

(Third Semester)

(B. Scheme) (Main & Re-appear)

(ME)

ME209B

MACHINE DRAWING

Time : 3 Hours]

[Maximum Marks : 60

Before answering the question-paper candidates should ensure that they have been supplied to correct and complete question-paper. No complaint, in this regard, will be entertained after the examination.

Note : Attempt *two* questions in all, selecting *one* question from each Unit. Linear and angular dimensions are in mm and degree respectively. Assume appropriate missing data, if any. Figures given are not to the scale.)

(2-14/19) M-C-35

P.T.O.

Unit I

1. Draw a neat labelled hand sketch of a knuckle joint. Discuss its applications. Give its bill of material indicating the part details and materials used. **20**

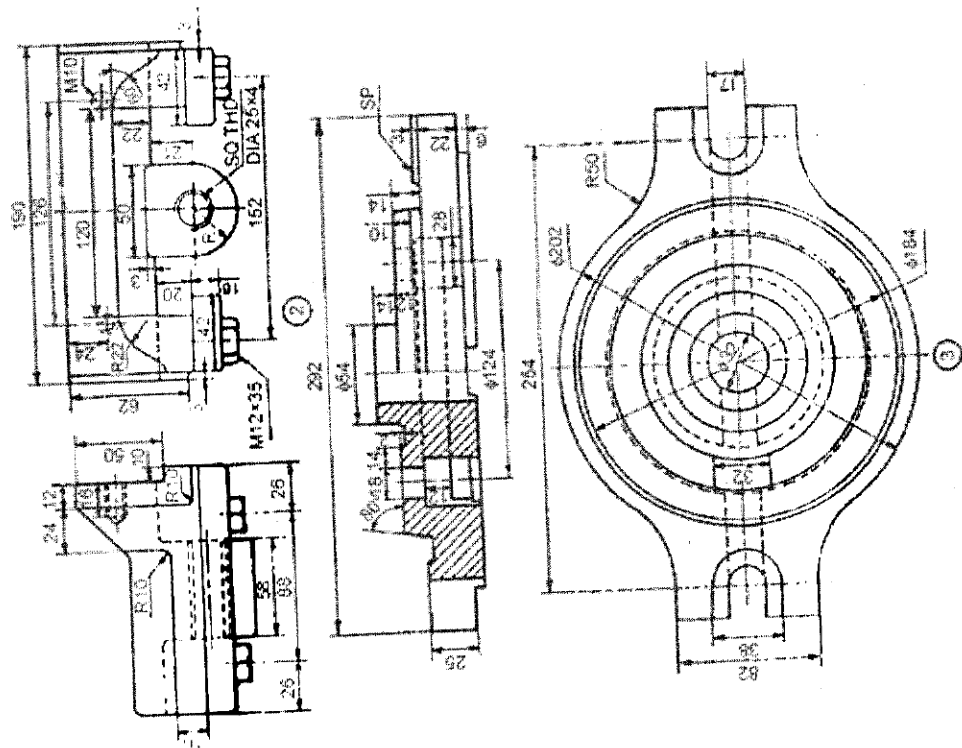
2. Draw the top view and sectional front view of a double riveted, double strap chain type butt joint for plates of 240 mm width with the following details :

Thickness of plates = 10 mm; Thickness of cover straps = 8 mm; Diameter of rivets = 20 mm; Pitch = 60 mm; End Margin = 30 mm, Row pitch = 50 mm; The snap revets with head diameter of 36 mm and snap height of 14 mm is to be used. **20**

Unit II

3. Draw the assembly of a swivel machine vice with the following details (Figure 1 attached). Indicate its bill of material details with different part names and materials. **40**

4. Draw the right side sectional front view for the steam stop valve assembly with the following details (Figure 2 attached). Indicate its bill of material details with different part names and materials. **40**



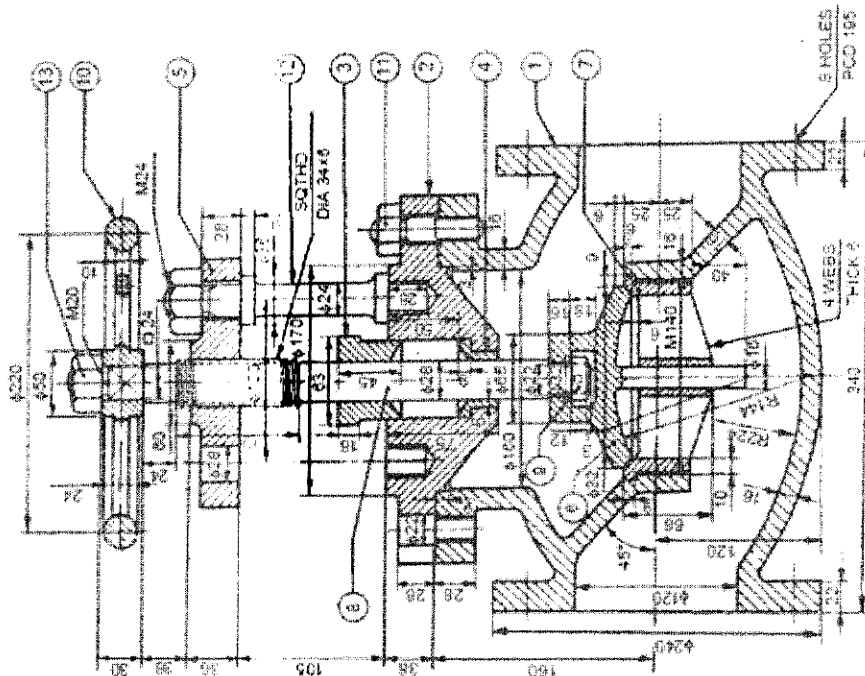


Figure 2: Details of a steam stop valve