

No. of Printed Pages : 03

Roll No. ....

**F-4001**

**B. Arch. EXAMINATION, May 2017**

(Sixth Semester)

(B. Scheme) (Main & Re-appear)

(ARCH.)

AR-304-B

BUILDING CONSTRUCTION AND  
MATERIALS-VI

*Time : 3 Hours]*

*[Maximum Marks : 75*

---

Before answering the question-paper candidates should ensure that they have been supplied to correct and complete question-paper. No complaint, in this regard, will be entertained after the examination.

---

**Note :** Question No. 1 is compulsory. Attempt any *two* questions out of rest four questions. All questions carry equal marks.

(2-39/11) M-F-4001

P.T.O.

1. Write short notes on the following :
  - (a) Draw any *ten* building material hatch patterns commonly used in buildings.
  - (b) Write specification for flooring material for toilets.
  - (c) Write specification for sanitary fixtures (like washbasin, WC) for toilets.
  - (d) Any five significance of building materials in architecture.
  - (e) Sketch any *five* types of wooden doors and windows types.

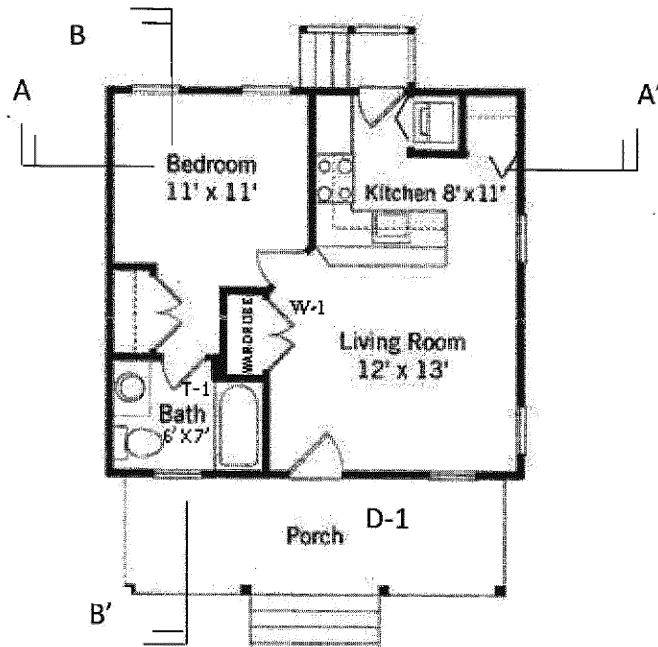


Figure 1

2. Draw foundation plan of the house as shown in fig. 1 with foundation details. Assume missing data suitably.
3. Draw section A-A' and section B-B' through the house as shown in Fig. 1. Take clear height 3.0 m. Assume missing data suitably.
4. Make complete construction details of Kitchen in the fig. 1. Draw detailed plan of the kitchen and all four side internal sections with necessary details.
5. Make complete wardrobe detail of W-1 in the fig. 1. Take wardrobe size as 1.2 m wide and 0.6 m deep. Draw at least one vertical sections through the wardrobe with blow-up details.