

2. Draw foundation plan of the house as shown in Fig. 1 with foundation details. Assume missing data suitably.
3. Draw one horizontal and one vertical section through the house as shown in Fig 1. Take clear height 3.6 m. Assume missing data suitably.
4. Make complete construction details of Kitchen in the Fig. 1. Draw detailed plan of the kitchen and all four side internal sections with necessary details.
5. Make complete toilet detail of T-1 in the Fig. 1. Draw detailed plane of the toilet and all four side internal sections with necessary details.

No. of Printed Pages : 04

Roll No. ....

**F-4001**

**B. Arch. EXAMINATION, May 2018**

(Sixth Semester)

(B. Scheme) (Main & Re-appear)

(ARCH.)

AR304B

BUILDING CONSTRUCTION AND  
MATERIALS-VI

*Time : 3 Hours]*

*[Maximum Marks : 75*

---

Before answering the question-paper candidates should ensure that they have been supplied to correct and complete question-paper. No complaint, in this regard, will be entertained after the examination.

---

**Note :** Q. No. 1 is compulsory. Attempt any *two* questions out of rest *four* questions. All questions carry equal marks.

1. Write short notes on the following :

- Draw and enumerate any *five* types of wooden doors.
- Write specification for toilet flooring material
- Write specification for wooden flooring in dance room.
- Draw and enumerate any *five* types of staircases.
- Draw and enumerate any *ten* electrical symbol used in working drawing.

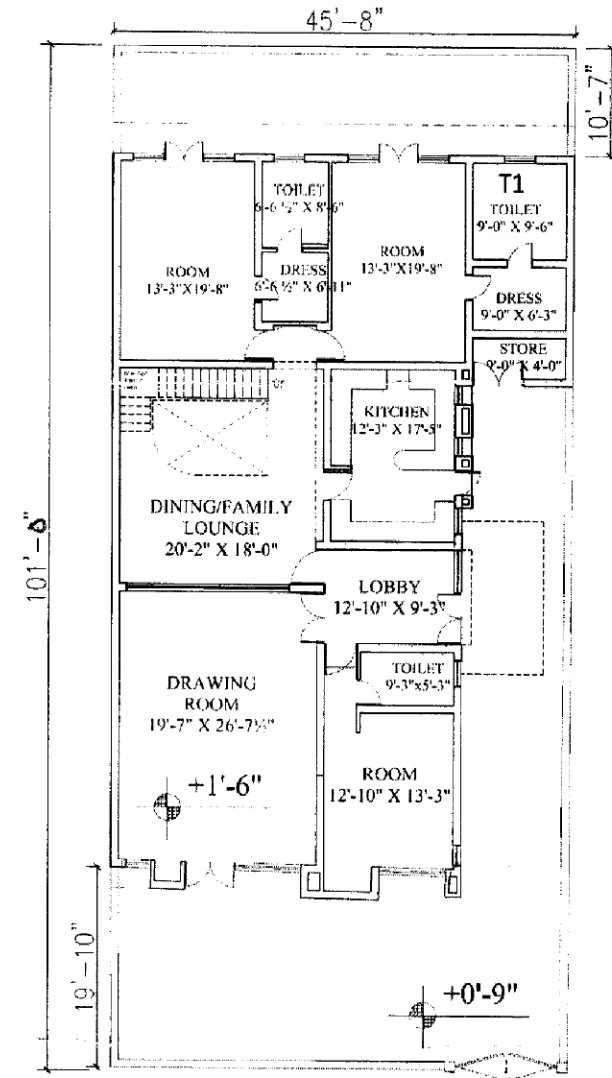


Figure 1